

COMPASS

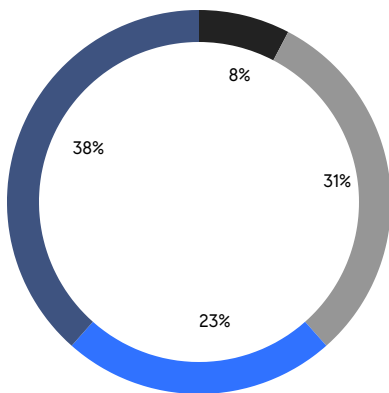
QUEENS WEEKLY LUXURY REPORT



5 CENTER DRIVE

RESIDENTIAL CONTRACTS
\$1.25 MILLION AND UP

- SOUTHEASTERN QUEENS
- CENTRAL QUEENS
- NORTHEASTERN QUEENS
- NORTHWESTERN QUEENS



13

CONTRACTS SIGNED
THIS WEEK

\$20,399,250

TOTAL CONTRACT VOLUME

The Queens luxury real estate market, defined as all properties priced \$1.25M and above, saw 13 contracts signed this week, made up of 4 condos, and 9 houses. The previous week saw 19 deals. For more information or data, please reach out to a Compass agent.

\$1,569,174

AVERAGE ASKING PRICE

\$1,395,000

MEDIAN ASKING PRICE

\$967

AVERAGE PPSF

1%

AVERAGE DISCOUNT

\$20,399,250

TOTAL VOLUME

75

AVERAGE DAYS ON MARKET

182-36 Aberdeen Road in Jamaica Estates entered contract this week, with a last asking price of \$2,300,000. Originally built in 1950, this ranch-style home spans 2,608 square feet with 3 beds and 3 full baths. It features a brick entry path, a landscaped front yard, hardwood floors throughout, a finished basement, a large living room with fireplace, a formal dining room, an eat-in kitchen with abundant cabinet space, and much more.

Also signed this week was 21 Borage Place in Forest Hills, with a last asking price of \$2,148,000. Originally built in 1935, this single-family house spans 2,261 square feet with 4 beds and 4 full baths. It features a walkway with front and rear access, a yard with mature plantings, a deck, hardwood floors throughout, a living room with fireplace, an open kitchen and dining area, a primary bedroom with balcony access, a finished lower level, and much more.

4

CONDO DEAL(S)

0

CO-OP DEAL(S)

9

TOWNHOUSE DEAL(S)

\$1,291,313

AVERAGE ASKING PRICE

\$0

AVERAGE ASKING PRICE

\$1,692,667

AVERAGE ASKING PRICE

\$1,297,375

MEDIAN ASKING PRICE

\$0

MEDIAN ASKING PRICE

\$1,480,000

MEDIAN ASKING PRICE

\$1,252

AVERAGE PPSF

\$840

AVERAGE PPSF

1,092

AVERAGE SQFT

2,156

AVERAGE SQFT



182-36 ABERDEEN ROAD

Jamaica Estates

TYPE	TOWNHOUSE	STATUS	CONTRACT	ASK	\$2,300,000	INITIAL	\$2,300,000
SQFT	2,608	PPSF	\$882	BEDS	3	BATHS	3.5
FEES	\$1,177	DOM	2				



21 BORAGE PL

Forest Hills

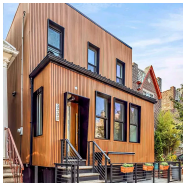
TYPE	TOWNHOUSE	STATUS	CONTRACT	ASK	\$2,148,000	INITIAL	\$2,148,000
SQFT	2,789	PPSF	\$771	BEDS	4	BATHS	4.5
FEES	\$880	DOM	2				



147-48 8TH AVE

Whitestone

TYPE	TOWNHOUSE	STATUS	CONTRACT	ASK	\$2,098,000	INITIAL	\$2,098,000
SQFT	2,683	PPSF	\$782	BEDS	5	BATHS	4.5
FEES	\$850	DOM	97				



32-38 38TH ST

Astoria

TYPE	TOWNHOUSE	STATUS	CONTRACT	ASK	\$1,790,000	INITIAL	\$1,750,000
SQFT	1,578	PPSF	\$1,135	BEDS	3	BATHS	2
FEES	\$568	DOM	212				



28-03 208TH ST

Bayside

TYPE	TOWNHOUSE	STATUS	CONTRACT	ASK	\$1,480,000	INITIAL	\$1,480,000
SQFT	2,273	PPSF	\$651	BEDS	4	BATHS	3.5
FEES	\$968	DOM	14				



33-82 155TH ST

Murray Hill

TYPE	TOWNHOUSE	STATUS	CONTRACT	ASK	\$1,398,000	INITIAL	\$1,398,000
SQFT	1,584	PPSF	\$883	BEDS	3	BATHS	2.5
FEES	\$858	DOM	15				

Compass is a licensed real estate broker and abides by Equal Housing Opportunity laws. All material presented herein is intended for informational purposes only. Information is compiled from sources deemed reliable but is subject to errors, omissions, changes in price, condition, sale, or withdrawal without notice. No statement is made as to the accuracy of any description. All measurements and square footages are approximate. This is not intended to solicit property already listed. Nothing herein shall be construed as legal, accounting or other professional advice outside the realm of real estate brokerage.



105-33 62ND DR

Forest Hills

TYPE	TOWNHOUSE	STATUS	CONTRACT	ASK	\$1,395,000	INITIAL	\$1,429,000
SQFT	1,337	PPSF	\$1,043	BEDS	3	BATHS	2.5
FEES	\$625	DOM	80				



116 AUDLEY ST

Kew Gardens

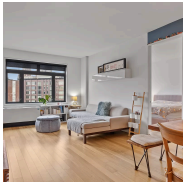
TYPE	HOUSE	STATUS	CONTRACT	ASK	\$1,350,000	INITIAL	\$1,499,999
SQFT	3,189	PPSF	\$470	BEDS	5	BATHS	4.5
FEES	\$1,342	DOM	267				



4-74 48TH AVE #29F/G

Long Island City

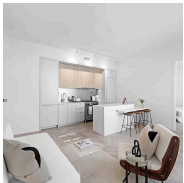
TYPE	CONDOP	STATUS	CONTRACT	ASK	\$1,300,000	INITIAL	\$1,300,000
SQFT	1,551	PPSF	\$839	BEDS	2	BATHS	2
FEES	\$3,201	DOM	19				



11-23 50TH AVE #5G

Long Island City

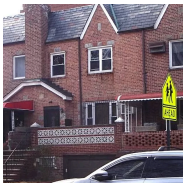
TYPE	CONDO	STATUS	CONTRACT	ASK	\$1,298,000	INITIAL	\$1,450,000
SQFT	1,087	PPSF	\$1,195	BEDS	2	BATHS	2
FEES	\$1,703	DOM	78				



29-18 41ST AVE #24D

Astoria

TYPE	CONDO	STATUS	CONTRACT	ASK	\$1,296,750	INITIAL	\$1,296,750
SQFT	864	PPSF	\$1,501	BEDS	2	BATHS	2
FEES	\$1,337	DOM	N/A				



33-52 75TH ST

Jackson Heights

TYPE	TOWNHOUSE	STATUS	CONTRACT	ASK	\$1,275,000	INITIAL	\$1,275,000
SQFT	1,356	PPSF	\$941	BEDS	3	BATHS	2
FEES	\$613	DOM	37				

Compass is a licensed real estate broker and abides by Equal Housing Opportunity laws. All material presented herein is intended for informational purposes only. Information is compiled from sources deemed reliable but is subject to errors, omissions, changes in price, condition, sale, or withdrawal without notice. No statement is made as to the accuracy of any description. All measurements and square footages are approximate. This is not intended to solicit property already listed. Nothing herein shall be construed as legal, accounting or other professional advice outside the realm of real estate brokerage.



29-18 41ST AVE #21D

Astoria

TYPE	CONDO	STATUS	CONTRACT	ASK	\$1,270,500	INITIAL	\$1,270,750
SQFT	864	PPSF	\$1,471	BEDS	2	BATHS	2
FEES	\$1,337	DOM	69				

Compass is a licensed real estate broker and abides by Equal Housing Opportunity laws. All material presented herein is intended for informational purposes only. Information is compiled from sources deemed reliable but is subject to errors, omissions, changes in price, condition, sale, or withdrawal without notice. No statement is made as to the accuracy of any description. All measurements and square footages are approximate. This is not intended to solicit property already listed. Nothing herein shall be construed as legal, accounting or other professional advice outside the realm of real estate brokerage.

© 2024 Compass. This report and information provided in this report are proprietary to Compass and may not be sold, used or reprinted, in whole or part, without the prior written consent in each instance of Compass. Data is subject to revision. Sourced from Compass proprietary database. All rights reserved.

[compass.com](https://www.compass.com)